

MagicInfo Player I

User Guide

Player I is an application which publishes and plays content created in the authoring tool MagicInfo Author or multimedia content (images, movies, sounds, etc) over servers or local area networks.

Contents

01 Before using

Understanding This Manual	3
Menu Command.....	3
Main Functions of Player I	3
System Requirements.....	5
Program Restrictions.....	5
Installation and Uninstallation	7
Program Installation	7
Program Uninstallation.....	8

02 Player I Composition

Icons and Components.....	9
MpAgent Status Indication.....	10
MpAgent Composition.....	10
MpFileTransfer Composition	10
MpWatcher Composition	11
MpPlayer Settings Screen	12
Settings	13
Content Publishing Using Removable Disks.....	13
Playing another content from a device	14
Playing another content using a playlist.....	14
Playing another content using a channel list	14
Playing the previous/next content	14

03 Settings

Configuration - Basic	15
Log-In.....	15
Configuration - Basic screen.....	15
Default	16
Server	17
Schedule.....	18
Play	19
Admin.....	20
Configuration - Advanced	21
Log-In.....	21
Configuration - Advanced Screen	21
Default	22
Network.....	23
TCP.....	23
Proxy	24

Server	25
MagicInfo Server	25
Tunneling Server.....	25
Schedule.....	26
List.....	26
Removable Disk.....	26
Download Schedules from Removable Disk.....	27
Play	28
Policy.....	29
Module	30
Admin	31
Tag List	31
Repository Path	31
Log	32
Proof of Play.....	32
Content.....	33
Password.....	34
VNC Password	34
Options.....	35
DataLink.....	36
Server settings.....	36
File Management.....	37
Option.....	37

04 Publishing via Removal Disk

Download from Removable Disk	38
------------------------------------	----

Understanding This Manual

This manual provides product information in easy-to-understanding instructions as follows.

Menu Command

Menu commands are described as follows: Select Start - Programs - MagicInfo.
- This means that you must select MagicInfo on the Programs tab on the Start menu.

Main Functions of Player I

Player I is an application which publishes and plays content created in the authoring tool MagicInfo Author or multimedia content (images, movies, sounds, etc) over servers or local area networks.

Various Playback Functions

- Playback of created content and general media content
- Playback of various components (movies, images, sounds, etc)
- Slideshow effect between themes (pages)
- Various effects, including Alpha, Push, Reveal, Fade
- Animation supported in components
- Streaming function is available
- Playback of time-based changeable dynamic data(Text, Image, Video, WordArt)
- A variety of dynamic data playback (Display on how to mark when the data group collection is set or failed)

Wide Range of Screen Resolutions Available

- Original size / Full screen / Original ratio
- Horizontal and vertical display modes are supported
- Extended multi-display mode is supported

Terminology

- **Extended multi-display mode is supported**

Multi-display means to use multiple monitors on a single PC. Using multiple display monitors as one large screen is called extended multi-display mode.

Programmed Content Playback

- Playback via Schedule publishing through a MagicInfo Server or removable disk
- Playback of a playlist or individual content
- Playback using up to 4 split screens and individual scheduling
- Panel turned on and off through scheduling
- Ultra-convenient playback of video/image Slideshow
- Playback of urgent messages received from MagicInfo Server

Remote Administration Through Job Scheduling

- Various functions (downloading, running or deleting files or folders, uploading files, executing commands, re-executing MpPlayer and rebooting LFD, and tasks such as Kill Process, Stop, Run service and Windows shutdown) are administered from MagicInfo Server through scheduling

Remote software update

- Remotely update the Player I software through MagicInfo Server

Various Setup Options

- Setup in basic mode and advanced mode is available
- Various functions provided, from basic server setup to log management

Variety of videowall configuration modes

- Play content on videowall devices using various configuration modes (formal/informal)
- In informal videowall configuration mode, videowall devices can be rotated to play content in a desired orientation
- Create videowall content to play content as a series of pages
- Create videowall content to play media content using various layouts
- Using the MagicInfo VideoWall Author program, conveniently arrange content to a desired format and change the location
- Conveniently publish schedules using the instant publish feature
- Play a synced emergency message on videowall devices
- Five types of videowall effects are provided
- Apply detailed effects using the effect delay settings (direction and duration)

Terminology

- Videowall

Videowall refers to a large-screen display consisting of two or more display devices. It is used to display large images that cannot be typically displayed on a single display device.

Player I supports content playback in formal and informal videowall configuration modes. In informal mode, device arrangement can be customized. In formal mode, devices can be arranged based on a predefined matrix such as 2x2 and 4x4.

System Requirements

Software

DirectX 9.0C or higher, Flash Player 6.0 or higher, IE 6.0
Separate installation by the user is required

- Acrobat Reader required for PDF components
- Office viewer required for Office components
- FireFox required for FireFox components
- Codec required for video playback

Network settings required to use videowall mode

1GB network

1GB Ethernet layer 2 switch hub (IGMP snooping supported)

LAN cable of UTP Cat 5e or higher supported (UTP or STP Cat 6 format recommended)

At least two up link ports recommended (optional) to extend the videowall in the future

Program Restrictions

- To access all of the functions provided by Player I, make sure to install the software on an SBB connected to the Samsung LFD. If the connected LFD is not made by Samsung, some functions will not work even if Player I is installed on the SBB. The functions that may not work include the functions to control devices, play schedules saved on a local area and publish schedules using a removable disk.
If your Samsung LFD is connected to a computer that is not an SBB and Player I is installed on the computer, you can access most of the device control functions by configuring related settings. If this is the case, using Player I with the computer administrator account is recommended.
- The password after the initial installation is '000000.' After changing the mode from Do not apply password security to Apply password security, if you save without setting a New Password, the Password is set as '000000'.
- The Display Rotation function only works if a Samsung LFD and a ATI graphics card are used.
- If Do not access MagicInfo Server mode is selected, setting the Port Number, IP and Domain is disabled.
- A running Schedule will not be deleted.
- Do not enter an Old Password when changing the mode from Do not apply password security to Apply password security.
- When downloading a Schedule from a removable disk, if no schedule is selected on the Run list, the previous schedule will be executed again even after the download is completed.
- The toolbar will be hidden if it has been left idle for a specified time or if anything other than the toolbar is clicked in the MpPlayer screen.
- You may not be able to upload content with Player I connected to MagicInfo Server if the firewall of an anti-virus program, such as V3, is running. In such a case, turn off the firewall and then upload content.

Tips

For detailed system specifications, please see the MagicINFO Player User Guide, which is available via the official Samsung Display site (<https://displaysolutions.samsung.com>).

- Settings required to control devices when the Samsung LFD is connected to a computer

Use the RS232C cable to connect the computer to the Samsung LFD, then configure the RDC options. You can access most of the device control functions. Refer to the technical guide at the Samsung Electronics Display Solution website or the GSBN website for details on how to configure the RDC options.

- RDC

RDC is an acronym for Remote Display Control. This feature allows you to control Samsung LFDs from MagicInfo Server.

- The screen may appear corrupted when a video in a non-standard file format is played on Windows Embedded Standard 7.
- Videowall mode is available in the following conditions: when you are using Samsung LFDs as videowall devices and information about the LFD models can be viewed through RDC from MagicInfo Server.
- To operate Player I using videowall mode, the videowall devices where Player I is installed must be connected to the same local network. This allows content playback to be in sync between the videowall devices.
- Publishing messages using videowall mode is only possible when videowall devices are in formal configuration mode.
- Content and message schedules cannot be published without configuring the arrangement of videowall devices.
- To sync effects that will be applied to videowall devices, make sure the connected videowall devices have the same playback settings and content.
- Sound output may not be available if HPD (Hot Plug Detect) occurs when connecting an SBB model to a Samsung LFD via a DP OUT port only and then playing content containing sound. (Example of HPD: Only the LFD turns off and then on again or when the LFD is disconnected and then connected again to an SBB) If this is the case, close and then run Player I again. Alternatively, stop and then play content file again.
(This is applicable to the following models equipped with Windows Embedded Standard 2009: SBB-D16AX2, SBB-D32AX2, SBB-Q16AX4, SBB-Q32AX4, SBB-D16CX2, SBB-D32CX2, SBB-Q16CX4, SBB-Q32CX4)

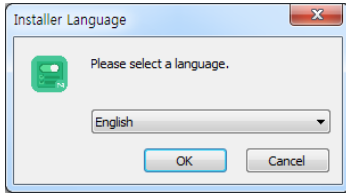
Terminology

- HPD

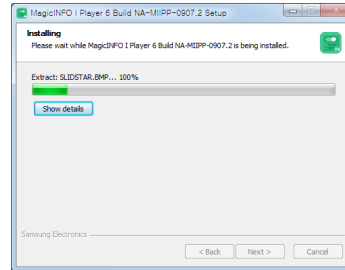
HPD, an acronym for Hot Plug Detect, refers to a signal that detects connections with display devices from network boxes and recognizes whether or not a connected display device is turned on.

Installation and Uninstallation

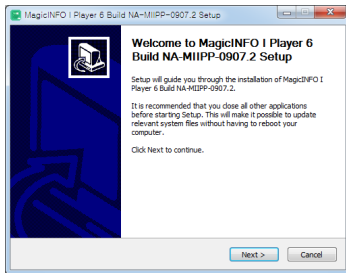
Program Installation



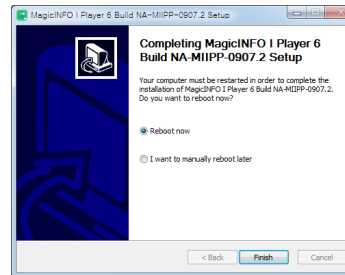
Execute the program installer file to start the Player I installation process. Specify the installation language.



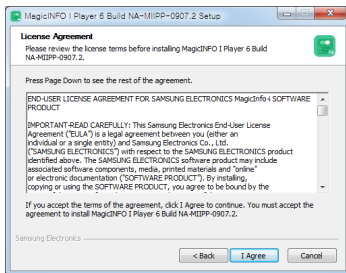
A window indicating the installation progress appears.



To proceed with installation, click Next to continue. If a previous version is installed, make sure to uninstall the previous version first.



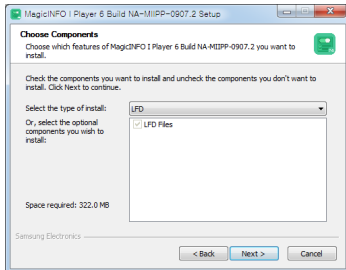
The installation process will be completed after this step.



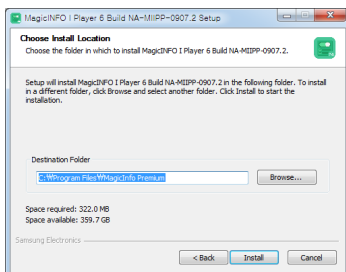
Read the license agreement thoroughly and click I Agree to proceed.



This icon is generated on the desktop when the installation is completed.

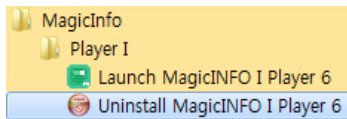


Select LFD as the install type, and then click Next to continue.

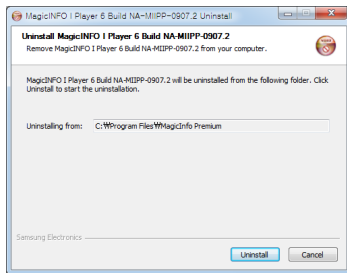


This screen allows you to select a destination folder to install the program. Click Install to install in the folder shown at the bottom. To install the program in another folder, click Browse, select another folder location, and then click Install.

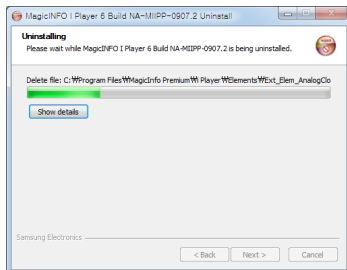
Program Uninstallation



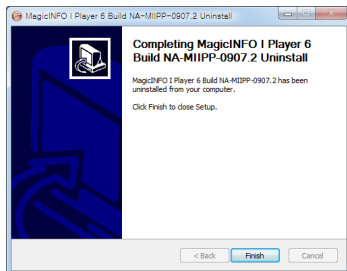
On the Windows Start menu, execute Programs - MagicInfo - Player I - Uninstall MagicInfo Player I.
Alternatively, you can execute Control Panel - Add or Remove Programs - Uninstall MagicInfo Player I.



Click Uninstall in the program uninstall confirmation page.




The program is uninstalled.



Click Finish to complete the uninstall process.

Icons and Components

After installing the program, if you double-click the MagicInfo Player I icon on the desktop, the MpPlayer will be run, and MpAgent, MpFileTransfer and MpWatcher will be displayed as icons  on the Windows taskbar.

MpPlayer is a module which plays contents created with MagicInfo Author or general media contents (videos, images, etc) when Player I is run.

MpAgent communicates with MagicInfo Server according to the settings in MpWatcher to download schedules and content, and instructs MpPlayer to play the content selected from a schedule.

MpAgent includes a remote control function which allows remote management and control of information on the status of Player I from MagicInfo Server.

MpFileTransfer is a module used for file sharing and manages the file download/upload between MagicInfo Server and Player I.

MpWatcher, the main module of Player I, instructs MpPlayer to play a specified playlist repeatedly for a specified time. You can set and control the items related to Player I using the setup tabs for each component.

Turn MpWatcher off to end the Player I.

Tips

 indicates that VNC is running through a tunneling server connection.

- VNC

VNC is the acronym for Virtual Network Computing and allows display settings to be viewed even on an extensive network. VNC servers manage and control the status of clients through VNC.

To prevent unauthorized access and to protect data, set the default password for VNC immediately after installation.




Samsung Electronics Co., Ltd. will not be liable for any loss or damage due to not changing the password.

For further details on how to set the VNC password, go to "Configuration - Advanced" – "Admin" and see "VNC Password."

- MpPlayer

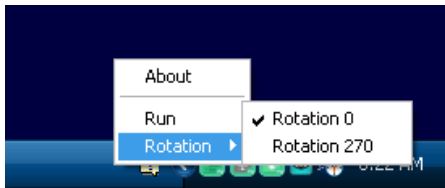
Default content is played if content for playback is not specified or when playback has finished.

MpAgent Status Indication

	Not connected to the MagicInfo Server.
	Not registered to the MagicInfo Server.
	Connected to the MagicInfo Server.

MpAgent Composition

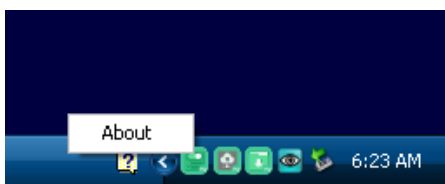
Right-click the MpAgent icon to display the menu tab.



About	View the version of the installed Player I.
Run	Run MpPlayer.
Rotation	Select Display Rotation. Two modes are available. (Rotation 0, Rotation 270)

MpFileTransfer Composition

Right-click the MpFileTransfer icon to display the menu tab.



About	View the version of the installed Player I.
--------------	--

Caution

- When connecting to MagicInfo Server

Enter the correct IP and Domain as failure to do so will not establish communication with MagicInfo Server.

Tips

- Rotation

You can specify the display orientation when Player I is installed on an SBB that uses Windows Embedded Standard 2009. This option is only enabled in this scenario and disabled under different configurations.

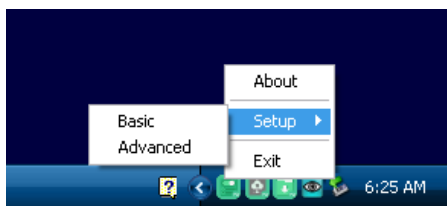
Caution

- Display Rotation

The Display Rotation function only works if a Samsung LFD and a ATI graphics card are used.

MpWatcher Composition

Right-click the MpWatcher icon to display the menu tab.



About	View the version of the installed Player I.
Setup	Customize various settings for Player I to your preferences.
Basic	Open Configuration - Basic.
Advanced	Open Configuration - Advanced.
Exit	Exit Player I.

Refer to the Settings section for details on Configuration - Basic and Configuration - Advanced.

Tips

- MpWatcher Settings

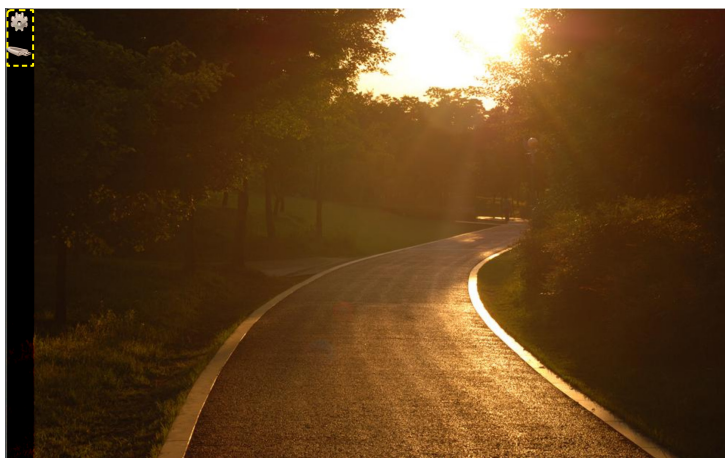
During the Basic setup or Advanced setup process, the MpFileTransfer and MpAgent functions become disabled and their icons disappear from the taskbar.

Upon closing the settings screen after changes are made, the MpFileTransfer and MpAgent functions that were previously disabled will be enabled.

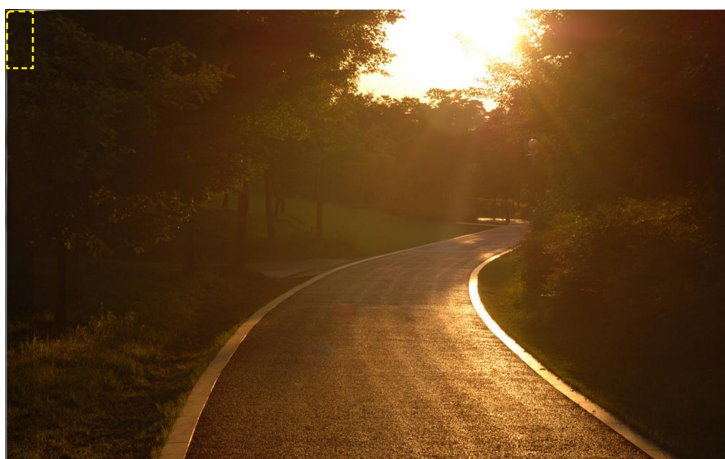
The taskbar icons will also be restored unless MpFileTransfer and MpAgent were closed before the settings were made.

MpPlayer Settings Screen

Start Player I to run MpPlayer. Click and hold the mouse button down at a corner of the MpPlayer screen for at least three seconds. The menu toolbar appears.



The toolbar will be hidden if it has been left idle for a specified time or if anything other than the toolbar is clicked.



(The toolbar is hidden)

Tips

- Mouse Cursor Display

The mouse cursor is not displayed when full screen mode is activated in MpPlayer.

Check Show Cursor on the Options tab in Configuration - Advanced to display the mouse cursor.

Caution

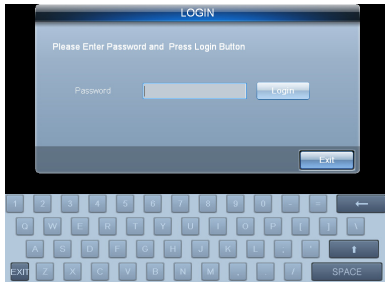
- Constraints to Using the Toolbar

The toolbar will not be displayed if the orientation of the display is portrait.

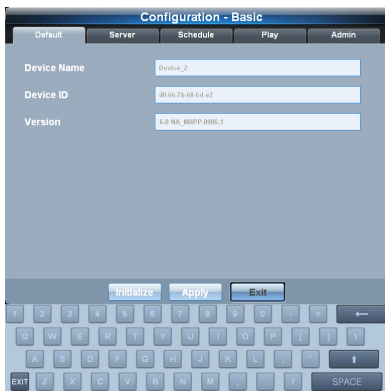
Settings



A pop-up window to change playback settings regarding Player I, MagicInfo Server and Schedule is displayed. Click this button to display the screen below.



Log-in is not required if no password is set.

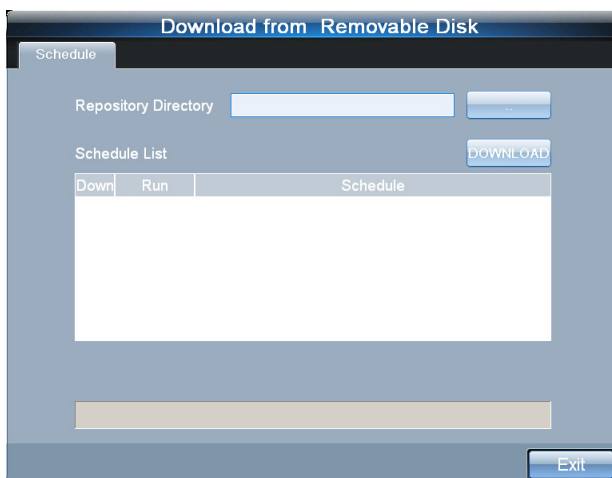


Content Publishing Using Removable Disks



A settings page for publishing contents from a removable disk is displayed.

If you connect a removable disk to the LFD and click this button, the window used to publish contents from the removable disk will be displayed.



Caution

- Conditions to publish content using a removable disk

The function to publish content using a removable disk is available when the Samsung LFD is connected to an SBB where Player I is installed. If these conditions are not met, the menu to access the function will not appear on the menu toolbar.

Playing another content from a device

When MPPlayer is running, you can play another content using a playlist or channel list displayed on a device. Alternatively, play another content directly from the content playback page.

Playing another content using a playlist

- To view a playlist from the device, press TOOLS on the Samsung remote control.

If Samsung Touch Overlay is installed on the device, touch and hold anywhere on the screen, and then select Playlist from the displayed window.
- Content published to the device will be displayed as thumbnails at the bottom of the screen. Use the ◀ / ▶ buttons on the remote control to move to the desired content item.

If Samsung Touch Overlay is installed on the device, slide the screen left or right to move to the desired content item.
- Select the desired content using the select button on the remote control. The content will play.

If Samsung Touch Overlay is installed on the device, tap the desired content. The selected content will play.

Playing another content using a channel list

- To view a channel list from the device, press CH LIST on the Samsung remote control.

If Samsung Touch Overlay is installed on the device, touch and hold anywhere on the screen, and then select CH List from the displayed window.
- A list of channels that belong to the schedule currently running will be displayed on the side of the screen. Use the ▲ / ▼ buttons on the remote control to move to the desired channel.
- Select the desired channel using the select button on the remote control. The page will switch to the selected channel showing the content currently playing on the channel.

If Samsung Touch Overlay is installed on the device, tap the desired channel. The page will switch to the selected channel showing the content currently playing on the channel.

Playing the previous/next content

To play the previous or next content, press ◀ / ▶ or ◀◀ / ▶▶ on the Samsung remote control. The previous or next content will play.

Terminology

- Channel

A channel is similar to a TV broadcast channel. Add and publish channels to a device when creating a schedule. This allows you to play desired content by changing the device channel.

For further details on channels, refer to the MagicInfo Server user guide.

Caution

- To use with a Samsung Remote Control,

Your Samsung SBB and Samsung LFD must be connected in order to use the Samsung Remote Control.

Tips

- Pausing content

To pause content currently playing, press || on the Samsung remote control. To play content, press ▶.

Caution

- Restrictions when playing another content using a remote control

Playing another content using a remote control may not be possible depending on the device model. If some buttons such as TOOLS or CH LIST are not available, playing another content directly from a device is not possible.

MagicInfo Player I

Settings

03

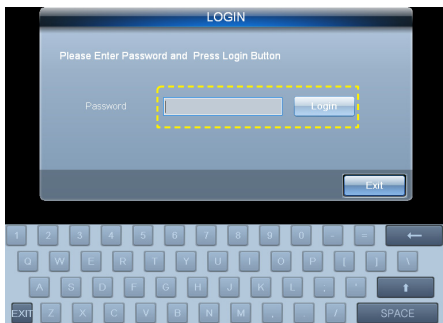
Configuration - Basic

There are two ways to access the Configuration - Basic screen.

- 1 Click the Settings icon on the MpPlayer menu toolbar.
- 2 Right-click on the MpWatcher icon on the Windows taskbar and click Setup - Basic on the menu tab.

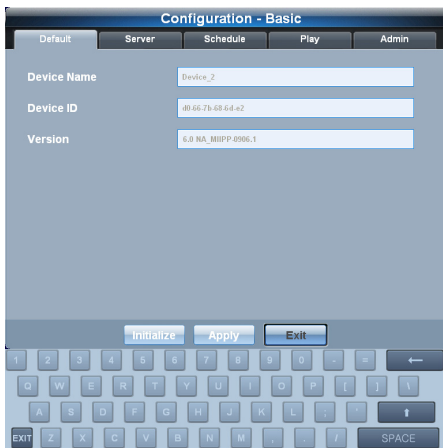
Log-In

In order to access the Settings screen, you must log in. Enter the Password and click **Login**. Log-in is not required if no password is set.



Configuration - Basic screen

After logging in, the Configuration - Basic screen is displayed. This page consists of five tabs (Default, Server, Schedule, Play and Admin).



Tips

- Password Setting

The password after the initial installation is '000000'.

After changing the mode from Do not apply password security to Apply password security, if you save without setting a New Password, the Password is set as '000000'.

To prevent unauthorized access and to protect data, change the password (which is set to '000000' by default) immediately after installation.

Samsung Electronics Co., Ltd. will not be liable for any loss or damage due to not changing the password.

- Keyboard

On the initial Settings screen, a keyboard is displayed.

Use the keyboard to change the Password or settings.

Click **EXIT** at the bottom left to hide the keyboard.

- After Making Changes to Settings

After making changes to settings for each tab, click Apply at the bottom to save the changes made.

Click Initialize to return all settings to default Player I settings.

Click Exit to exit the Settings screen.

Default

This screen displays the default settings of Player I.

Configuration - Basic

Default | Server | Schedule | Play | Admin

Device Name: Device_2

Device ID: d0-66-7b-68-6d-e2

Version: 6.0_NA_MIIPP-0906.1

Initialize | Apply | Exit

Device Name	Shows the name of the device Player I is installed in. (Modification can only be made in MagicInfo Server.)
Device ID	Identify a device on the MagicInfo Server using the Mac address of the network card.
Version	Shows the Version of the installed Player I.

Tips

- Device Settings

Device Name is the name of a computer.

Device Name is NONAME after initial installation.

Device Name can only be modified in MagicInfo Server.

Server

This screen is used to make the network settings required to connect MagicInfo Server to Player I.

The screenshot shows a configuration window titled "Configuration - Basic" with tabs for Default, Server, Schedule, Play, and Admin. The "Server" tab is active. Under "MagicInfo Server", there are three radio buttons: "Do not access MagicInfo Server", "Access MagicInfo Server periodically" (which is selected), and "Domain". Below these are input fields for "Port Number" (7001), "IP" (10.10.10.100), and "Domain" (www.samsung.com). Under "Tunneling Server", there is a "Server Address (IP)" field with the value 10.10.10.231. At the bottom are "Initialize", "Apply", and "Exit" buttons, and a virtual keyboard.

Do not access MagicInfo Server	There is no communication with MagicInfo Server.
Access MagicInfo Server periodically	Regular communication with MagicInfo Server takes place. When this mode is selected, setting the Port Number, IP and Domain of MagicInfo Server items is enabled.
Port Number	Set the FTP Port of MagicInfo Server for content download.
IP	Set the IP of MagicInfo Server for content download. (e.g. 192.168.2.100) Domain cannot be selected if IP is selected.
Domain	Set the Domain address of MagicInfo Server for content download. (e.g. http://217.141.3.213:7001/MagicInfo) IP cannot be selected if Domain is selected.
Server Address (IP)	Enter in the IP or URL address of the tunneling server that will be used on the VNC.

After making changes to settings for connecting Player I to MagicInfo Server on the Server Settings tab, the status of the connection to MagicInfo Server is indicated by the change in the MpAgent icon on the Windows taskbar.

Caution

- Settings

If Do not access MagicInfo Server mode is selected, setting the items in Access MagicInfo Server periodically is disabled.

- When connecting to MagicInfo Server

Enter the correct IP and Domain as failure to do so will not establish communication with MagicInfo Server.

Tips

- VNC

VNC is the acronym for Virtual Network Computing and allows display settings to be viewed even on an extensive network. VNC servers manage and control the status of clients through VNC.

Schedule

This page allows you to run, stop or delete a schedule saved on your PC.



The list of Schedule saved in the user-specified folder is displayed. To delete a Schedule, select the Schedule to delete and click **Delete**. To run a Schedule, select the Schedule to run and click **Run**. The **Stop** button stops the schedule currently running and plays the default content.

Prev	View the Schedule on the previous page.
Next	View the Schedule on the next page.
Slideshow	Select the effects to be used when playing the images or videos from a removable disk. (The same effects used in MagicInfo Author are automatically applied.)
Image slide period (Sec)	Set the time interval at which images will change when effects are applied to images. (Range: 5 - 3,600 seconds)
Schedules on Removable Disk	Run the Schedule saved on removable disks.
Copy and play from a removable disk	When a removable disk is connected, copy Schedule from the removable disk to your computer and run it.
Play directly from a removable disk	Run Schedule directly from a removable disk that is connected.

If a schedule is being published to a device from MagicInfo Server, the schedule on MagicInfo Server is run first even if you try to run a schedule saved on your computer.

In other words, the schedule on MagicInfo Server is always run first. Be sure to check the schedule on MagicInfo Server when attempting to run a schedule saved on your computer.

Caution

Conditions required to use the Schedule menu

The Schedule tab appears when the Samsung LFD is connected to an SBB where Player I is installed.

Repository Directory

The repository folder location can be set in Configuration - Advanced - Admin - Repository Path.

Deleting a Schedule

A currently set or running Schedule cannot be deleted.

Restrictions for stopping a running schedule

If there is a schedule currently being published from the server when the option Access MagicInfo server periodically (which accesses the MagicInfo Server periodically to receive published schedules) is enabled, the schedule will start running again even if you attempt to stop it.

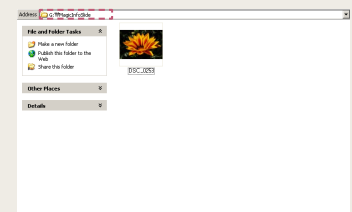
For further details on communicating with the server, see the Server section.

Tips

Slideshow

Images or videos you load from a removable disk to apply slide effects must be saved in the MagicInfoSlide folder.

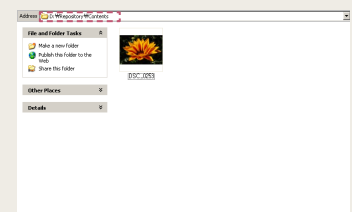
(e.g. File DSC_0253 in the G:\MagicInfoSlide folder)



Copy and play from a removable disk

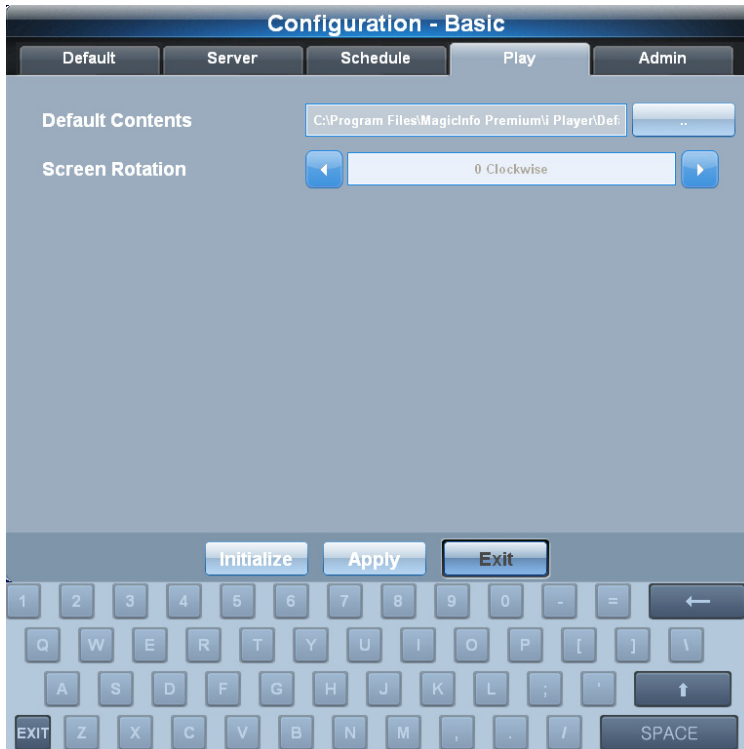
If Copy and play from a removable disk mode is selected, the contents to be played are automatically copied to the Contents folder in the repository folder of your computer and run.


(e.g. File DSC_0253 in the D:\Repository\Contents folder)



Play

This screen is used to change the settings regarding content playback.



Default Contents	<p>Specify the contents to be played by default when a schedule is not run in Player I. (Videos and flash contents are recommended as Default Contents.) Click  to set the folder where the contents are saved.</p>
Screen Rotation	<p>Change the display direction.</p>
0 Clockwise	<p>View the playback screen in the original direction without rotation.</p>
270 Clockwise	<p>Rotate the screen by 270 degrees clockwise.</p>

Tips

- Screen Rotation

You can specify the display orientation when Player I is installed on an SBB that uses Windows Embedded Standard 2009. This option is only enabled in this scenario and disabled under different configurations.

Caution

- Display Rotation

The Display Rotation function only works if a Samsung LFD and a ATI graphics card are used.

Admin

This screen is used to set the password used for log-in.

The screenshot shows the 'Configuration - Basic' screen with tabs for Default, Server, Schedule, Play, and Admin. The 'Admin' tab is active. Under the 'Password' section, there are two radio buttons: 'Do not apply password security.' (unselected) and 'Apply password security.' (selected). Below this is the 'Change Password' section with three text input fields: 'Old Password', 'New Password', and 'Confirm Password'. At the bottom of the screen are three buttons: 'Initialize', 'Apply', and 'Exit'. A virtual keyboard is visible at the bottom of the screen.

Do not apply password security

Select this mode if you do not want to use a password for log-in.
If this mode is selected, no log-in is required to access the Configuration - Basic and Configuration - Advanced screens.

Apply password security

Select this mode if you want to use a password for log-in.

Old Password

Enter the current password.

New Password

Enter a new password.

Confirm Password

Enter the new password again.

Caution

- Password Setting

If Do not apply password security mode is selected, setting the Change Password item is disabled.

After changing the mode from Do not apply password security to Apply password security, if you save without setting a New Password, the Password is set as '000000'.

If Do not apply password security mode is selected before changing the Password, leave the Old Password field empty.

Tips

- After Making Changes to Settings

After making changes to settings for each tab, click Apply at the bottom to save the changes made.

Click Initialize to return all settings to default Player I settings.

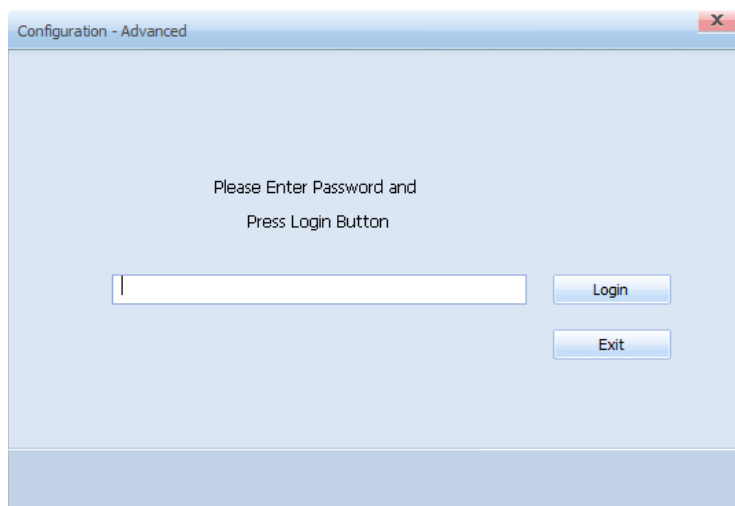
Click Exit to exit the Settings screen.

Configuration - Advanced

The following settings screen is displayed if the MpWatcher icon is right-clicked on the Windows taskbar and Advanced is selected on the Setup tab.

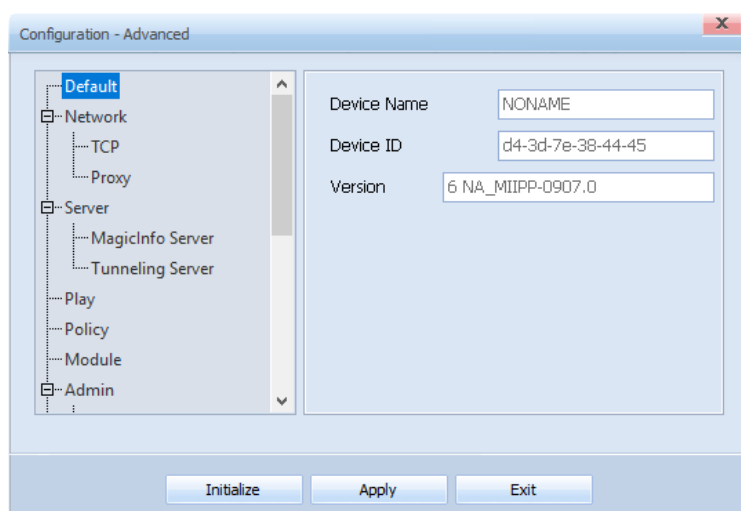
Log-In

In order to access the Settings screen, you must log in. Enter the Password and click . Log-in is not required if no password is set.



Configuration - Advanced Screen

After logging in, the Configuration - Advanced screen is displayed. Configuration - Advanced allows you to configure advanced settings for the Player I that are not available in Configuration - Basic. This page consists of ten tabs (Default, Network, Server, Schedule, Play, Policy, Module, Admin, Options and DataLink).



Tips

- Password Setting

The password after the initial installation is '000000'.

To prevent unauthorized access and to protect data, change the password (which is set to '000000' by default) immediately after installation.

Samsung Electronics Co., Ltd. will not be liable for any loss or damage due to not changing the password.

- After Making Changes to Settings

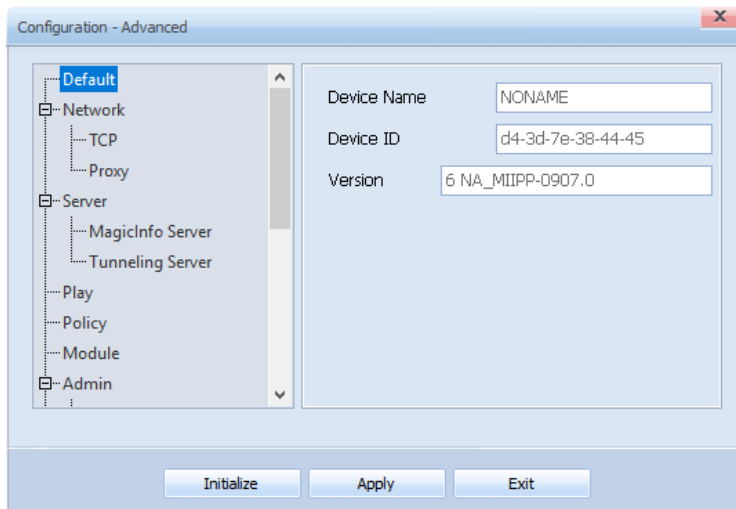
After making changes to settings for each tab, click Apply at the bottom to save the changes made.

Click Initialize to return all settings to default Player I settings.

Click Exit to exit the Settings screen.

Default

This screen displays the default settings of Player I and its internal components are identical to Configuration - Basic.



Device Name	Shows the name of the device Player I is installed in. (Modification can only be made in MagicInfo Server.)
Device ID	Identify a device on the MagicInfo Server using the Mac address of the network card.
Version	Shows the Version of the installed Player I.

Tips

- Device Settings

Device Name is the name of a computer.

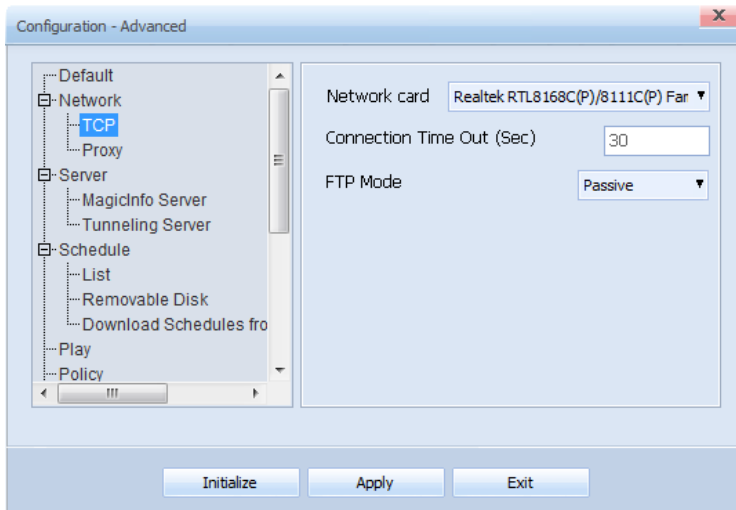
Device Name is NONAME after initial installation.

Device Name can only be modified in MagicInfo Server.

Network

Set the Network of a device.

TCP



Tips

- TCP

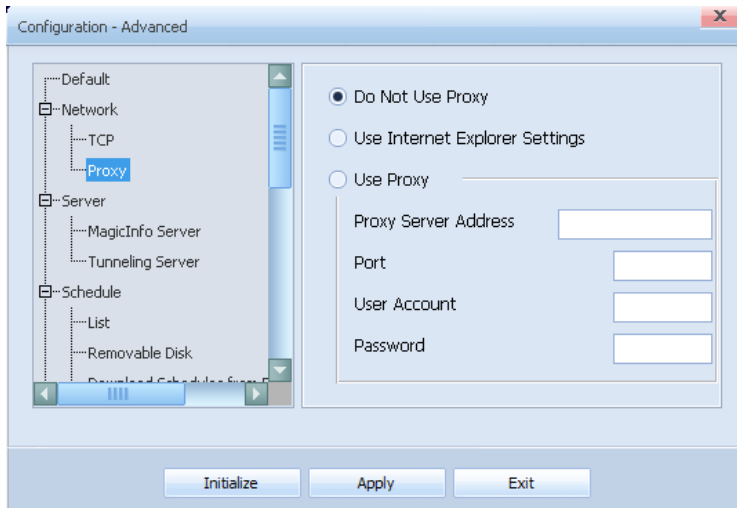
TCP is the acronym for Transmission Control Protocol, which is a communication protocol used on computer networks.

- FTP

FTP is the acronym for File Transfer Protocol, which is a file transfer mode widely used on the Internet.

Network card	Set the Network card used to transmit data between MagicInfo Server and Player I.
Connection Time Out (Sec)	Set the maximum time Player I will spend in an attempt to establish a connection to MagicInfo Server in order to download/upload a file. It can be set in seconds, from 30 seconds up to 5 minutes.
FTP Mode	Set FTP Mode when downloading data from MagicInfo Server.
Active	Use this mode when no firewall is in place between Player I and MagicInfo Server.
Passive	Use this mode when a firewall is in place between Player I and MagicInfo Server.

Proxy



Tips

- Proxy

A proxy server performs the role of transmitting data between MagicInfo Server and Player I.

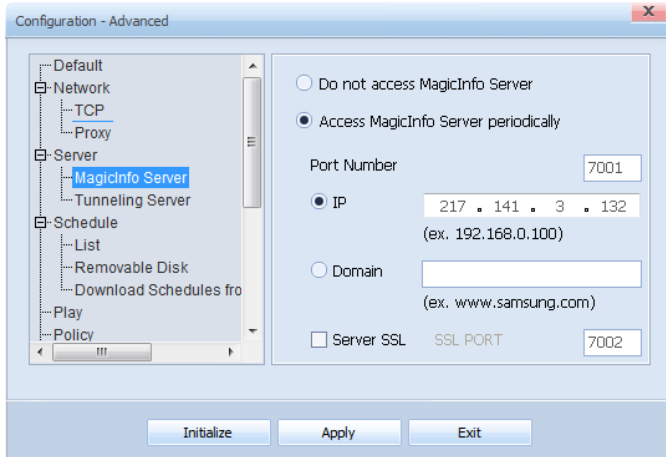
For security, data must be transmitted between MagicInfo Server and Player I through a proxy server.

Do Not Use Proxy	Select this mode not to use proxy server settings. All items in Use Proxy are disabled if this mode is selected.
Use Internet Explorer Settings	Apply the proxy settings used in Internet Explorer.
Use Proxy	Directly enter a proxy server. If this mode is selected, the Proxy Server Address, Port, User Account and Password items are enabled.
Proxy Server Address	Enter the Proxy Server Address IP.
Port	Enter the proxy server Port.
User Account	Enter the proxy server User Account.
Password	Enter the proxy server Password.

Server

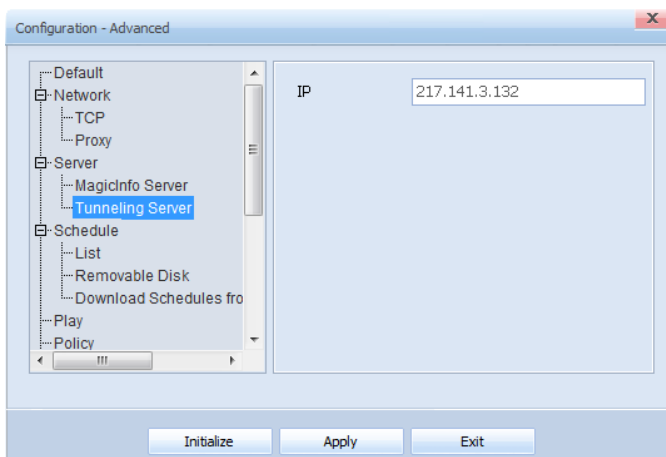
This screen is used to change the network settings required to connect MagicInfo Server to Player I. The internal components are identical to Configuration - Basic.

MagicInfo Server



Do not access MagicInfo Server	There is no communication with MagicInfo Server. All items in Access MagicInfo Server periodically are disabled if this mode is selected.
Access MagicInfo Server periodically	Regular communication with MagicInfo Server takes place. If this mode is selected, the Port Number, IP, Domain and Server SSL items are enabled.
Port Number	Set the FTP Port of MagicInfo Server for content download.
IP	Set the IP of MagicInfo Server for content download. (e.g. 192.168.2.100) Domain cannot be selected if IP is selected.
Domain	Set the Domain address of MagicInfo Server for content download. (e.g. http://217.141.3.213:7001/MagicInfo) IP cannot be selected if Domain is selected.

Tunneling Server



Enter in the IP or URL address of the tunneling server that will be used on the VNC.

Caution

- Settings

If Do not access MagicInfo Server mode is selected, setting the items in Access MagicInfo Server periodically is disabled.

- When connecting to MagicInfo Server

Enter the correct IP and Domain as failure to do so will not establish communication with MagicInfo Server.

Tips

- Server SSL

SSL is the acronym for Secure Sockets Layer, which is a security authentication mechanism.

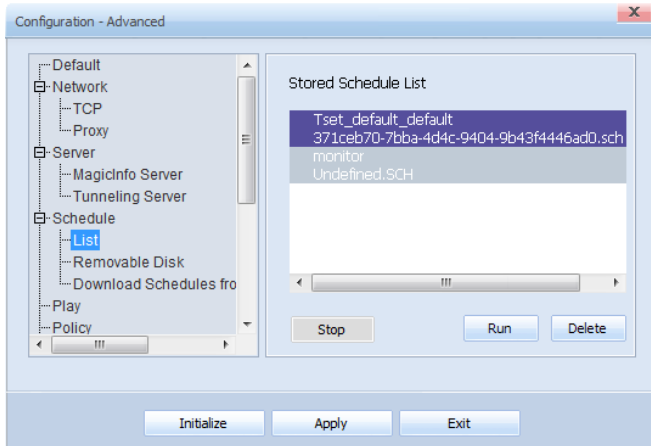
If this item is set, packet security encryption is enabled when transmitting data between MagicInfo Server and Player I.

If Server SSL mode is selected, the SSL PORT field is activated and a Port number can be entered.

Schedule

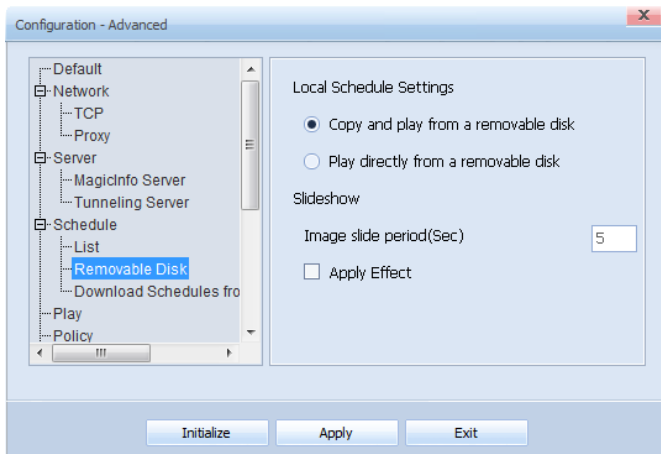
This page allows you to run, stop or delete a schedule saved on your PC. For details on available options and how to configure the settings, refer to the details about the Schedule tab under the section "Configuration - Basic."

List



A list of schedule saved in the user-specified repository folder is displayed. Select a schedule and Click **Run**, then the schedule will be run. Click **Delete** to delete the schedule. The **Stop** button stops the schedule currently running and plays the default content.

Removable Disk



Local Schedule Settings

Make the settings for the Schedule and contents you want to publish from a removable disk, not MagicInfo Server.

Copy and play from a removable disk

Copy contents from a connected removable disk to your computer and then run them.

Play directly from a removable disk

Play contents directly from a removable disk that is connected.

Slideshow

Select the effects to be used when playing the images or videos from a removable disk. (The same effects used in MagicInfo Author are automatically applied.)

Image slide period (Sec)

Set the time interval at which images will change when effects are applied to images. (Range: 5 - 3,600 seconds)

Caution

- Conditions required to use the Schedule menu

The Schedule tab appears when the Samsung LFD is connected to an SBB where Player I is installed.

- Repository Directory

The repository folder location can be set in Configuration - Advanced - Admin - Repository Path.

- Deleting a Schedule

A currently set or running schedule cannot be deleted.

- Restrictions for stopping a running schedule

If there is a schedule currently being published from the server when the option Access MagicInfo server periodically (which accesses the server periodically to receive published schedules) is enabled, the schedule will start running again even if you attempt to stop it.

For further details on communicating with the server, see the Server section.

- Local Schedule Settings

If a schedule is being published to a device from MagicInfo Server; the schedule on MagicInfo Server is run first even if you try to run a schedule saved on your computer.

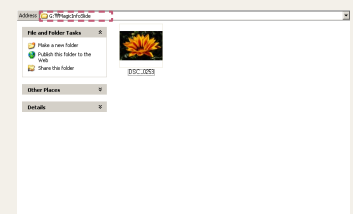
In other words, the schedule on MagicInfo Server is always run first. Be sure to check the schedule on MagicInfo Server when attempting to run a schedule saved on your computer.

Tips

- Slideshow

Images or videos you load from a removable disk to apply slide effects must be saved in the MagicInfoSlide folder.

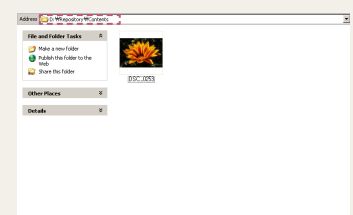
(e.g. File DSC_0253 in the G:\MagicInfoSlide folder)



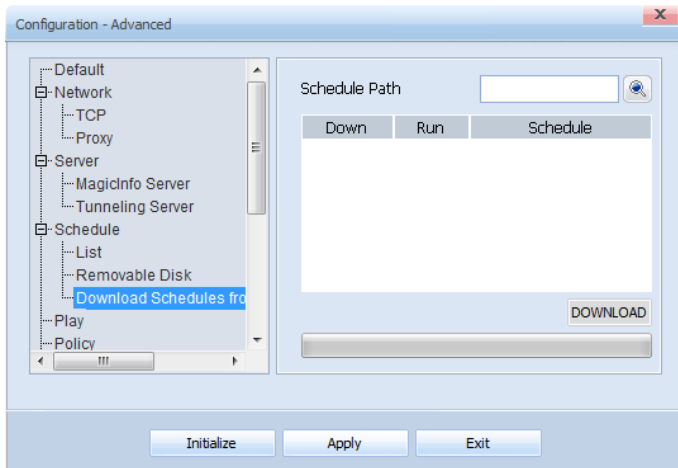
- Copy and play from a removable disk


If Copy and play from a removable disk mode is selected, the contents to be played are automatically copied to the Contents folder in the repository folder of your computer and run.

(e.g. File DSC_0253 in the D:\Repository\Contents folder)

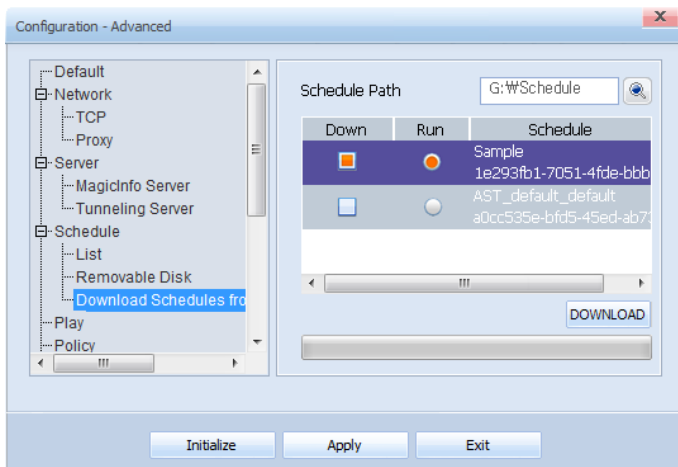


Download Schedules from Removable Disk



Click  to set the path to the removable disk where schedule and content are saved.

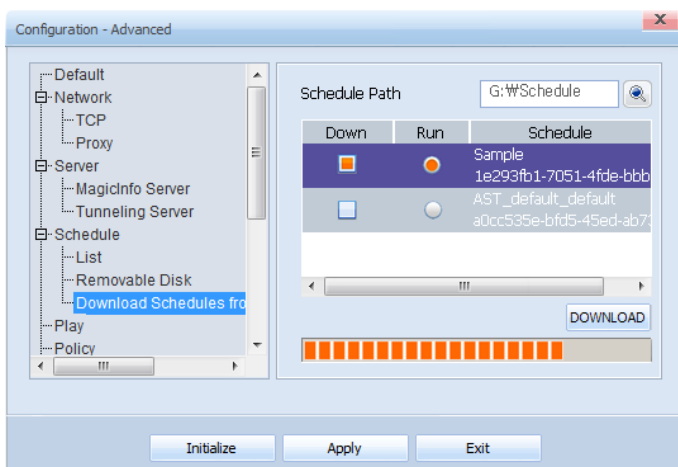
If the path is set correctly, a list of schedule is displayed as shown below.



Check the schedule to download in Down.

Check the schedule to run after download in Run.

Click DOWNLOAD to download the selected schedule and specified content as shown below.



When download is completed, the schedule selected in Run is run.

A schedule not selected for Run is saved in the Schedule folder of the repository folder upon completion of download.

Tips

- Run

Schedule on a removable disk must be in the Schedule folder to be read.

- Repository Folder

If the path to the repository folder is not set, contents and schedule are saved to the default Repository folder.

Caution

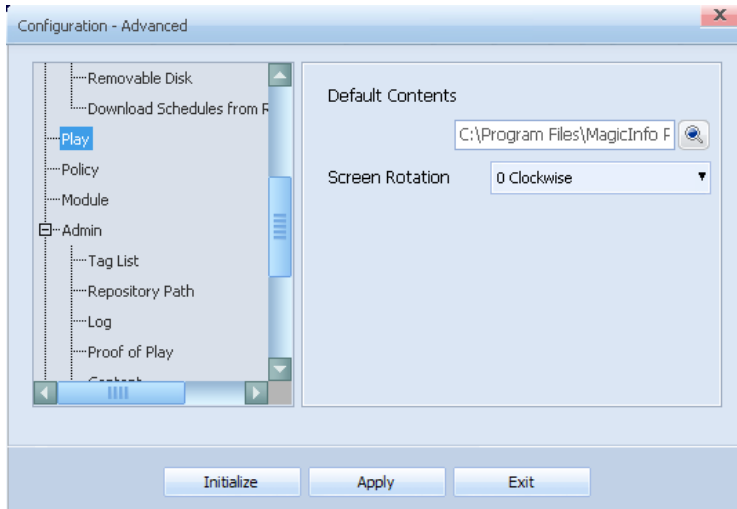
- Local Schedule Settings

If a schedule is being published to a device from MagicInfo Server, the schedule on MagicInfo Server is run first even if you try to run a schedule saved on your computer.

In other words, the schedule on MagicInfo Server is always run first. Be sure to check the schedule on MagicInfo Server when attempting to run a schedule saved on your computer.

Play

This screen is used to change the settings regarding content playback. The internal components are identical to Configuration - Basic.




Tips

- Screen Rotation

You can specify the display orientation when Player I is installed on an SBB that uses Windows Embedded Standard 2009. This option is only enabled in this scenario and disabled under different configurations.

Default Contents

Specify the contents to be played by default when a schedule is not run in Player I. (Videos and flash contents are recommended as Default Contents.) Click  to set the folder where the contents are saved.

Screen Rotation

Change the display direction.

0 Clockwise

View the playback screen in the original direction without rotation.

270 Clockwise

Rotate the screen by 270 degrees clockwise.

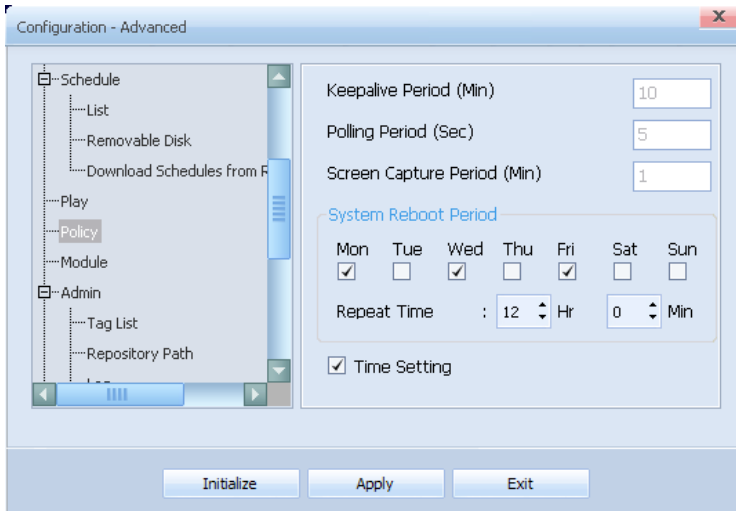
Caution

- Display Rotation

The Display Rotation function only works if a Samsung LFD and a ATI graphics card are used.

Policy

You can set the time in Player I and view the display settings made in MagicInfo Server.



Keepalive Period (Min)	<p>Use this timer to check that connection is established properly between MagicInfo Server and Player I. Set time in minutes in MagicInfo Server.</p>
Polling Period (Sec)	<p>Set the time interval at which Player I information is sent to MagicInfo Server and some information from MagicInfo Server is received. Set time in seconds in MagicInfo Server.</p>
Screen Capture Period (Min)	<p>Set the time interval at which the screen of the device will be captured. Set time in minutes in MagicInfo Server. Captured screens are saved in the Thumbnail folder of the repository folder and can be viewed in View Captured Image on the Monitoring tab in MagicInfo Server.</p>
System Reboot Period	<p>Configure the system restart cycle. You can specify the days of the week and time the system shall restart. The system will not restart unless you select the checkboxes for the desired days of the week.</p>
Time Setting	<p>If this item is selected, the time on the LFD monitor (OSD time) is synchronized with the OS where Player I is installed.</p>

Tips

- System Reboot Period
 The system restart cycle for a device can also be configured on the server. The system restart cycle configured on the Player I will also be displayed on the server.
 For details on how to configure the device system restart cycle on the server, refer to the MagicInfo Server user guide.

Terminology

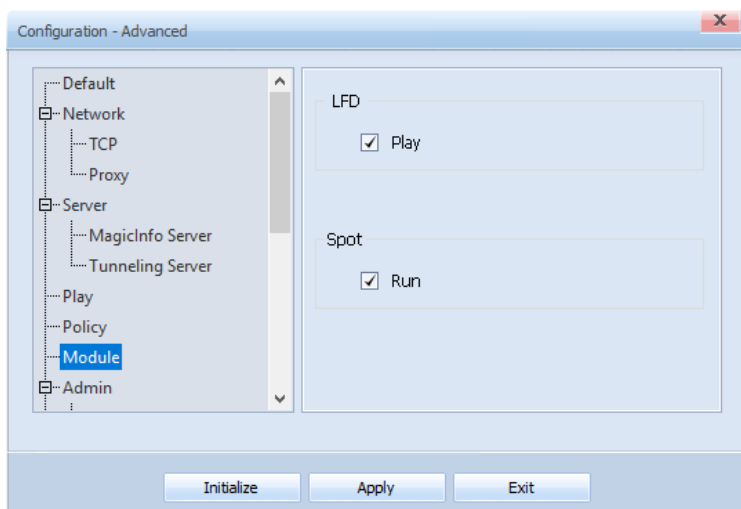
- What is OSD?
 OSD is the acronym for On-Screen Display and refers to terminology displayed on the screen.

Caution

Keepalive Period (Min), Polling Period (Sec) and Screen Capture Period (Min) can be configured on the MagicInfo Server only.

Module

This option shows the install type (module) configured during program installation.



LFD	Play contents or schedule on the LFD.
Play	Uncheck this to use a RM license to access the MagicInfo Server.
Spot	
Run	Tick the Run checkbox to use the Spot feature.

Tips

- LFD

LFD is the acronym for Large Format Display and refers to a large monitor used to display information.

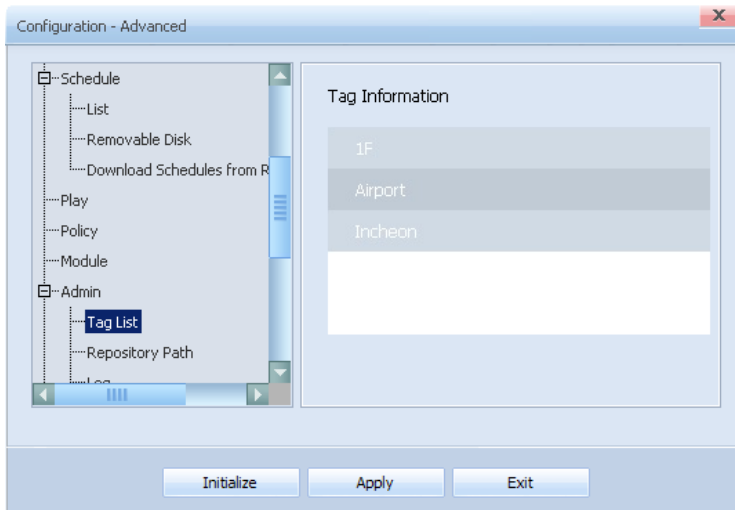
- Spot

For details about Spot, refer to the user guide for Spot.

Admin

View the tag information and set the path to the management folder and repository folder, and make detailed settings regarding the management folder.

Tag List



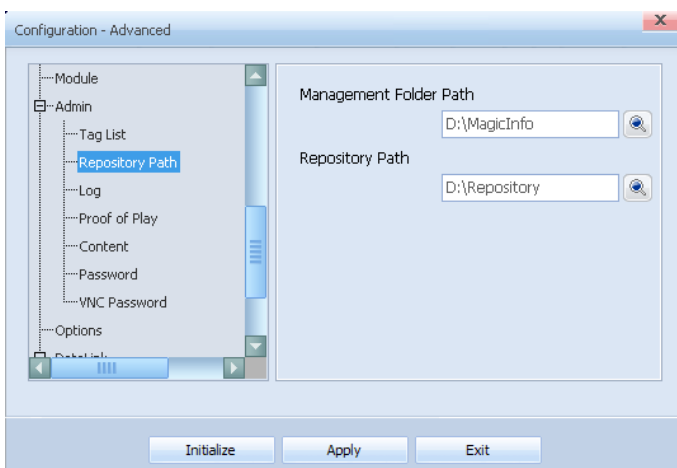
Or

With this setting, the content from the server can be played when one or more of its tags matches those of the LFD.

And

With this setting, the content from the server can be played when all of its tags matches those of the LFD.

Repository Path



Management Folder Path

Set the path to the Management folder.

Repository Path

Set the path to the folder in which the schedule and contents downloaded from MagicInfo Server are saved.

Tips

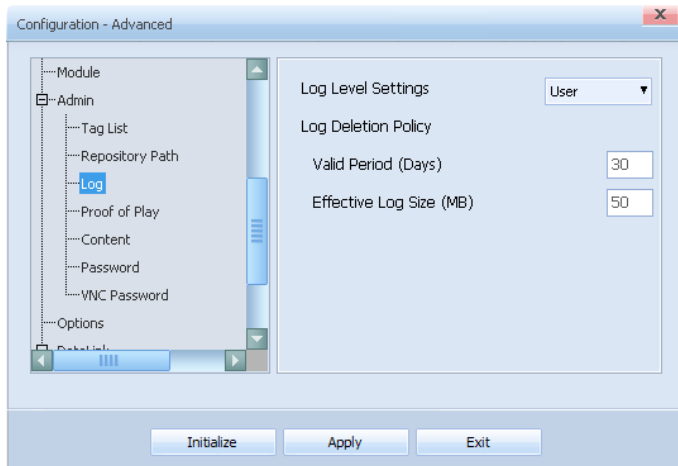
- Management Folder

The Log and Proof of Play generated when schedules are played in Player I are saved in the Management folder.

- Repository Folder

Four folders (Contents, Job Schedule, Messages, Schedules) are created in the default folder when a repository folder is generated.

Log



Tips

- Log

Log is a history of activities in Player I.

Log keeps record of all activities that take place on the computer system, including a log-in history, based on time.

In Player I, Log level is divided into User, Developer and Debugger. Log level is more complex and detailed at the Debugger level.

Log Level Settings

Log level is divided into User, Developer and Debugger. The User level is recommended for general users.

Log Deletion Policy

Set the period and size for automatic deletion of Log.

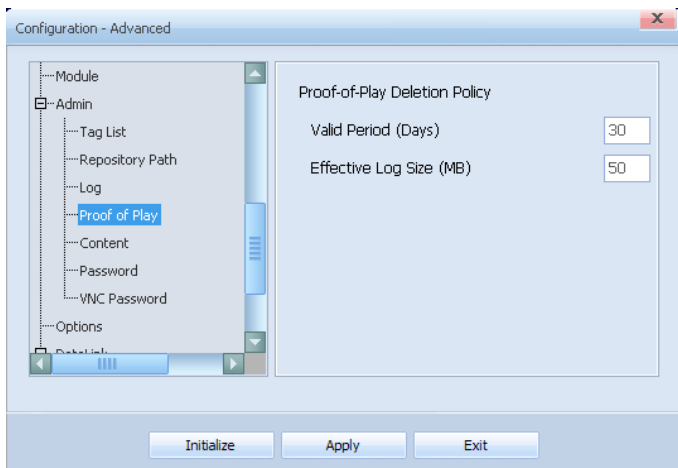
Valid Period (Days)

Log is automatically deleted when the specified period of time (days) is exceeded.

Effective Log Size (MB)

Log is automatically deleted when the total size of the Log folder exceeds the specified limit.

Proof of Play



Proof-of-Play Deletion Policy

Set the period and file size for deletion of Proof of Play.

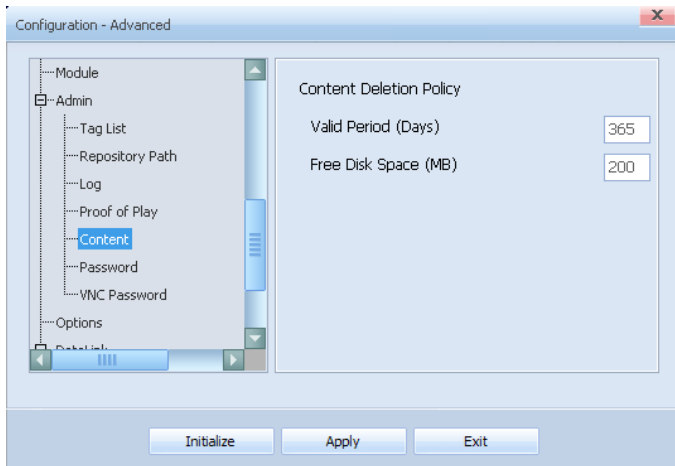
Valid Period (Days)

Proof of Play is deleted automatically when the specified period of time (days) is exceeded.

Effective Log Size (MB)

Proof of Play is deleted automatically when the total size of the Proof of Play folder exceeds the specified limit.

Content



Content Deletion Policy

Set the period for deletion of contents saved on your computer and the size of surplus space in the Contents folder.

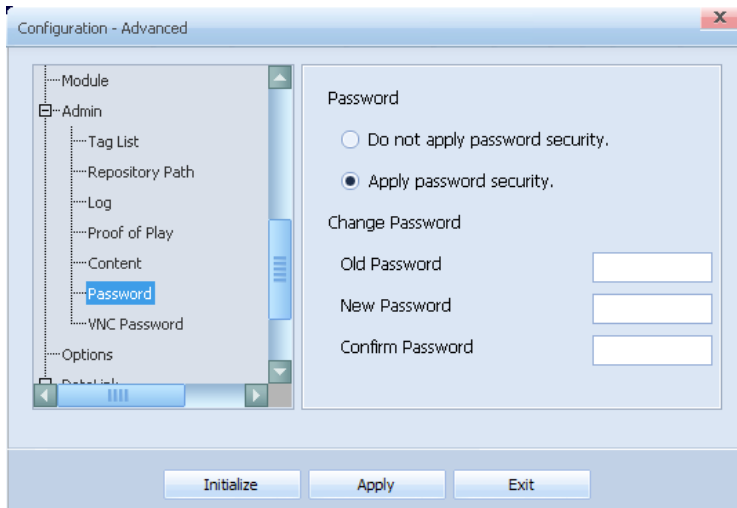
Valid Period (Days)

Contents are automatically deleted when the specified period of time (days) is exceeded.

Free Disk Space (MB)

Contents are automatically deleted when the surplus space in the Contents folder exceeds the specified limit.

Password



Caution

- Password Setting

The Change Password item is disabled if Do not apply password security mode is selected.

After changing the mode from Do not apply password security to Apply password security, if you save without setting a New Password, the Password is set as '000000'.

Leave the Old Password field empty if Do not apply password security mode is selected before changing the Password.

Do not apply password security

Select this mode if you do not want to use a password for log-in. If this mode is selected, no log-in is required to access the Configuration - Basic and Configuration - Advanced screens.

Apply password security

Select this mode if you want to use a password for log-in.

Old Password

Enter the current password.

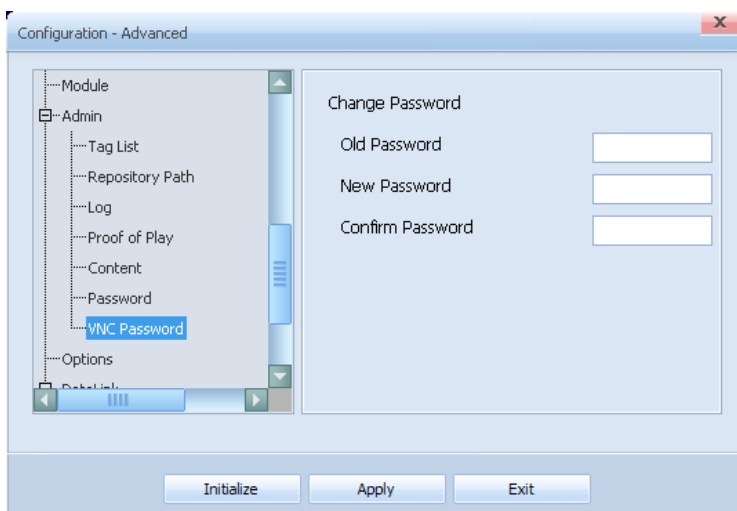
New Password

Enter a new password.

Confirm Password

Enter the new password again.

VNC Password



Tips

The password is set to "000000" by default during installation. The password can be alphanumeric and contain up to 8 characters.

Old Password

Enter the current password.

New Password

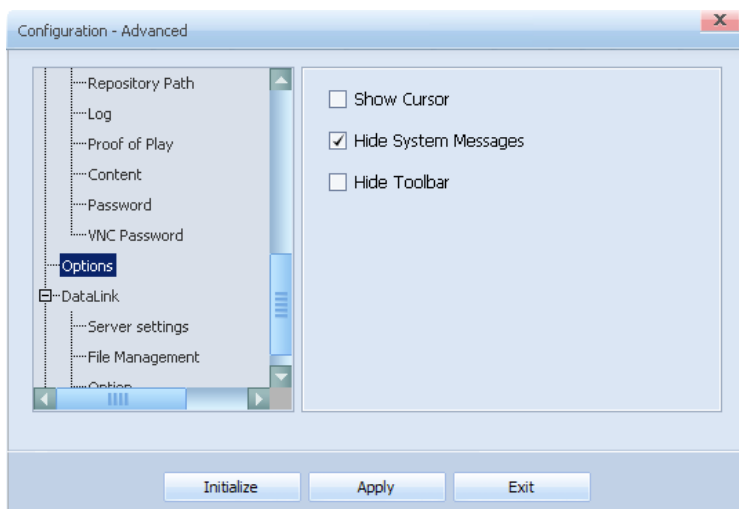
Enter a new password.

Confirm Password

Enter the new password again.

Options

Configure the settings that will be applied while MpPlayer is playing content. The following can be shown or hidden: cursor, Windows system message, and toolbar.



Show Cursor	Select this mode to show the mouse cursor on the screen when MpPlayer is in playback mode.
Hide System Messages	Select this mode to hide Windows system messages (error messages, etc) when MpPlayer is in playback mode.
Options	Select the checkbox to hide the toolbar when MpPlayer is playing content.

Tips

- After Making Changes to Settings

After making changes to settings for each tab, click Apply at the bottom to save the changes made.

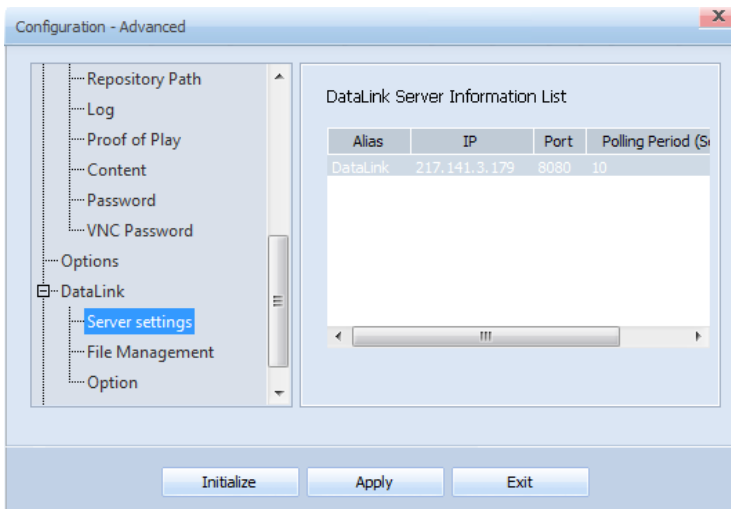
Click Initialize to return all settings to default Player I settings.

Click Exit to exit the Settings screen.

DataLink

View any information on DataLink Server.

Server settings



Terminology

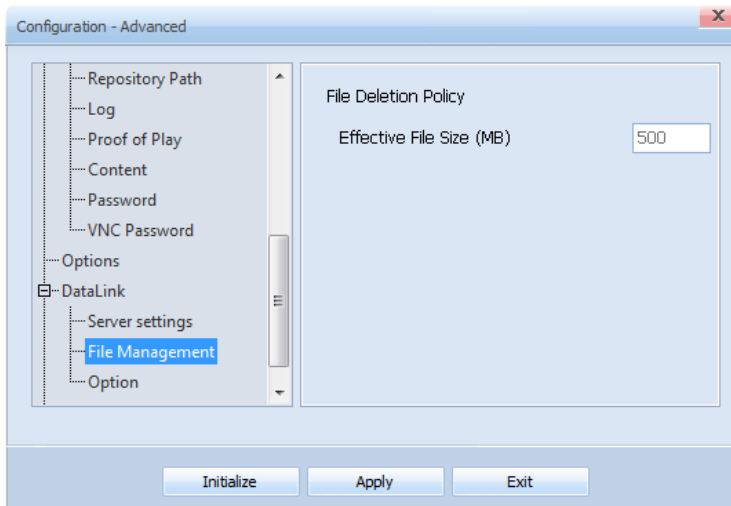
- DataLink Server

DataLink Server is a web-based application that collects external data periodically and send it to Player I to display dynamic content.

For further details on DataLink Server, refer to the MagicInfo DataLink user guide.

Alias	Shows the name of the DataLink Server.
IP	Shows the IP address of the DataLink Server.
Port	Shows the port required to request information from DataLink Server.
Polling Period (Sec)	Shows the period of requesting information from DataLink Server. This option is only used if there is no value assigned to DataLink Content.
SSL	Shows whether or not the SSL is used.
FTP Port	Shows FTP port in which image and video files are downloaded.
Bypass	Shows whether or not the MagicInfo Server uses the DataLink Server for information request.

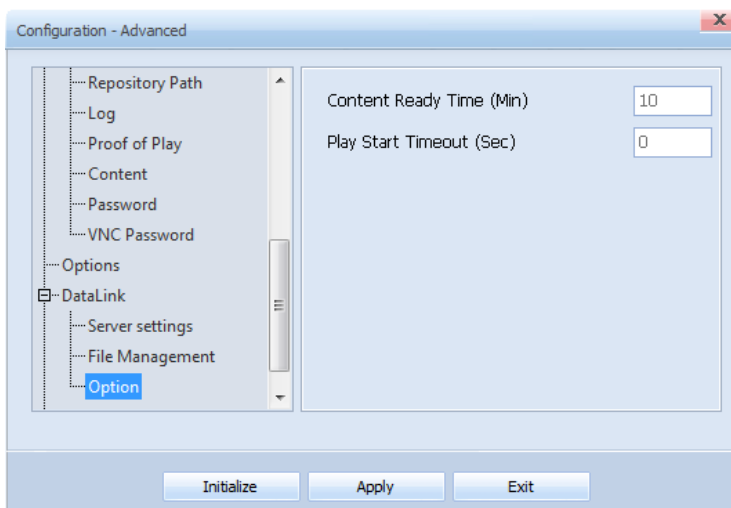
File Management



Effective File Size (MB)

Deletes the data downloaded from DataLink Server, if the file size of the data(video, image) exceeds predetermined effective size.

Option



Content Ready Time (Min)

Sets the length of time to preload the next content from the DataLink server.

Play Start Timeout (Sec)

Sets the length of time to wait for data loaded from DataLink Server.

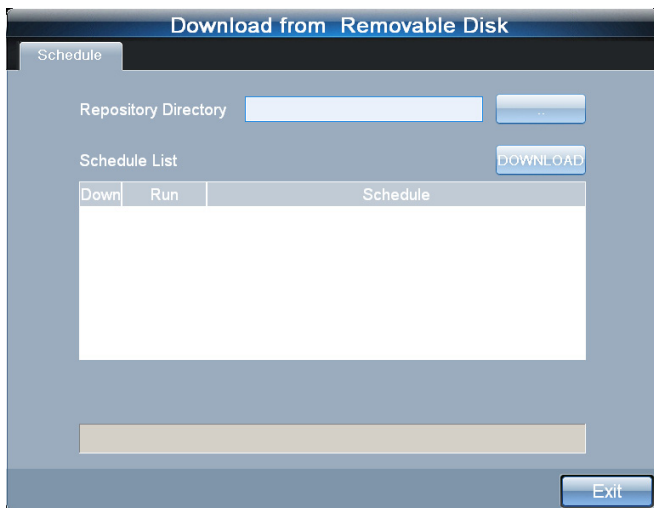
Download from Removable Disk

The contents and schedule to be played on the LFD are published from MagicInfo Server by default.

However, content and schedule can be published from a removable disk without a network if MagicInfo Server cannot be accessed.

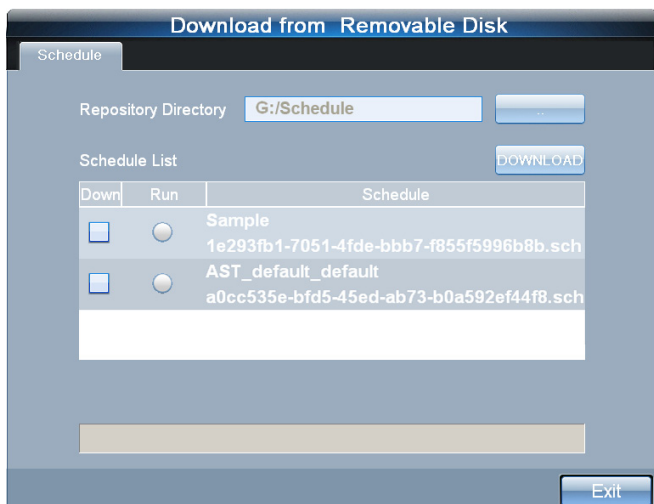
Connect a removable disk to PC.

Click the removable disk publishing toolbar button on the MpPlayer screen. The screen below is published when the removable disk publishing toolbar button is clicked.



Click to set the path to the removable disk where schedule and contents are saved.

A list of schedule is displayed as shown below if the path is set correctly.



Caution

- Conditions to publish content using a removable disk

The function to publish content using a removable disk is available when the Samsung LFD is connected to an SBB where Player I is installed. If these conditions are not met, the menu to access the function will not appear on the menu toolbar.

Tips

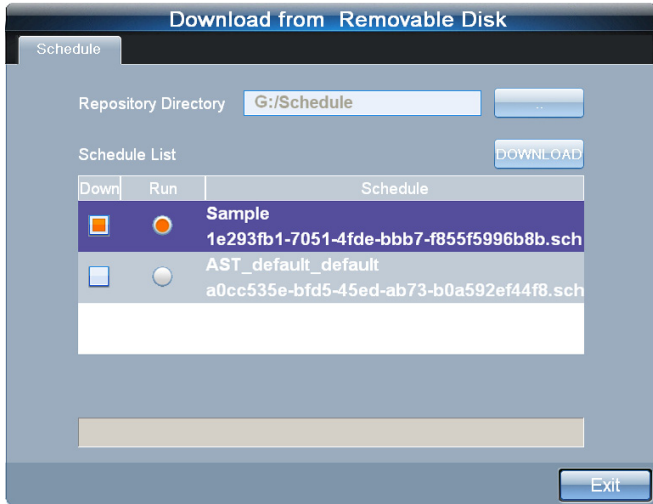
- Removable Disk

If the schedule of content created in MagicInfo Author is saved on a removable disk without accessing MagicInfo Server, the schedule will be automatically read and run.

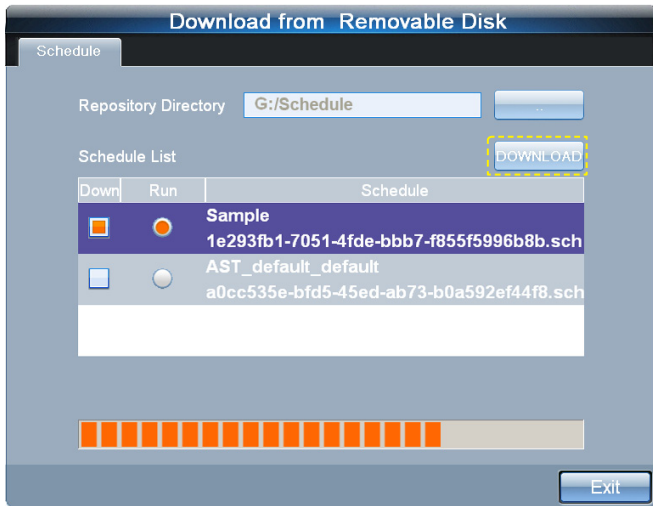
- Download Schedules from Removable Disk

Schedule on a removable disk must be in the Schedule folder to be read.

Check the schedule to download in Down.
Check the schedule to run after download in Run.



Click the DOWNLOAD button to download the selected schedules and specified contents as shown below.



Upon completion of download, schedule selected in Run is run, and downloaded content and schedule are saved in the repository folder.

Tips

- Run

Schedule on a removable disk must be in the Schedule folder to be read.

- Repository Folder

If the path to the repository folder is not set, contents and schedule are saved to the default Repository folder.